

# Faculty Workshop One – October 12, 2022



## ENVISIONING THE COUNTRYSIDE ELEMENTARY SCHOOL FACILITY

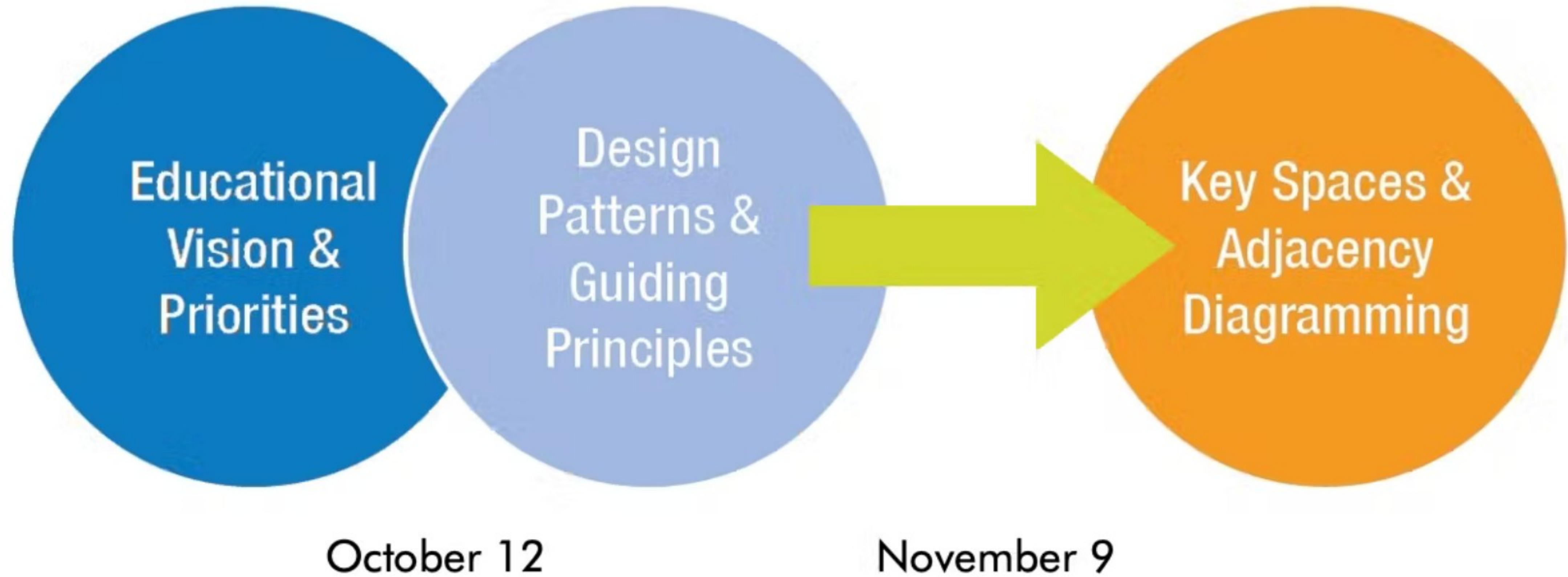




# The Visioning Process



Countryside Elementary



# Agenda



Countryside Elementary

1. Introductions and Overview (5 min)
2. Educational and Architectural Priority Setting (25 min)
3. The Countryside Elementary School Facility:  
Strengths, Challenges, and Opportunities (15 min)
4. Design Pattern Presentation (30 min)
5. Small Group Design Pattern Prioritization (30 min)



# Developing a Narrative

- Educational vision
- Design priorities and goals
- Desired adjacencies
- Optimization of MSBA space template
- Educational Plan





# Building Upon

- Current Innovation Agenda and Programming
- School Improvement Plan
- DRAFT Education Plan
- Other Sources?





# Any renovated or New School Will Have...

- ADA Compliance
- Safe Entry and Security Features
- Thermal Comfort (Heating and Cooling)
- Modern Technology and Furniture
- Well-Sized Classrooms  
with Natural Light





# Any renovated or New School Will Also Have...

- Indoor/Outdoor Connectivity
- Push-In Special Ed (Breakout Rooms)
- Safe Drop-Off and Pick-Up
- Sustainable Building Features
- Adequate Number of Distributed Bathrooms and Gender Neutral Bathrooms





# Overarching Themes

- Use every square inch of the building
- Create flexible and multi-use spaces
- Extend learning beyond classroom walls
- Build synergy and connectivity between varied spaces
- Define learning clusters and communities





# Instructions



What three words best describe the culture of teaching, learning, and community at the Countryside Elementary School?

collaborative  
inclusive  
adaptive  
safe flexible supportive  
welcoming warm diverse





Countryside Elementary

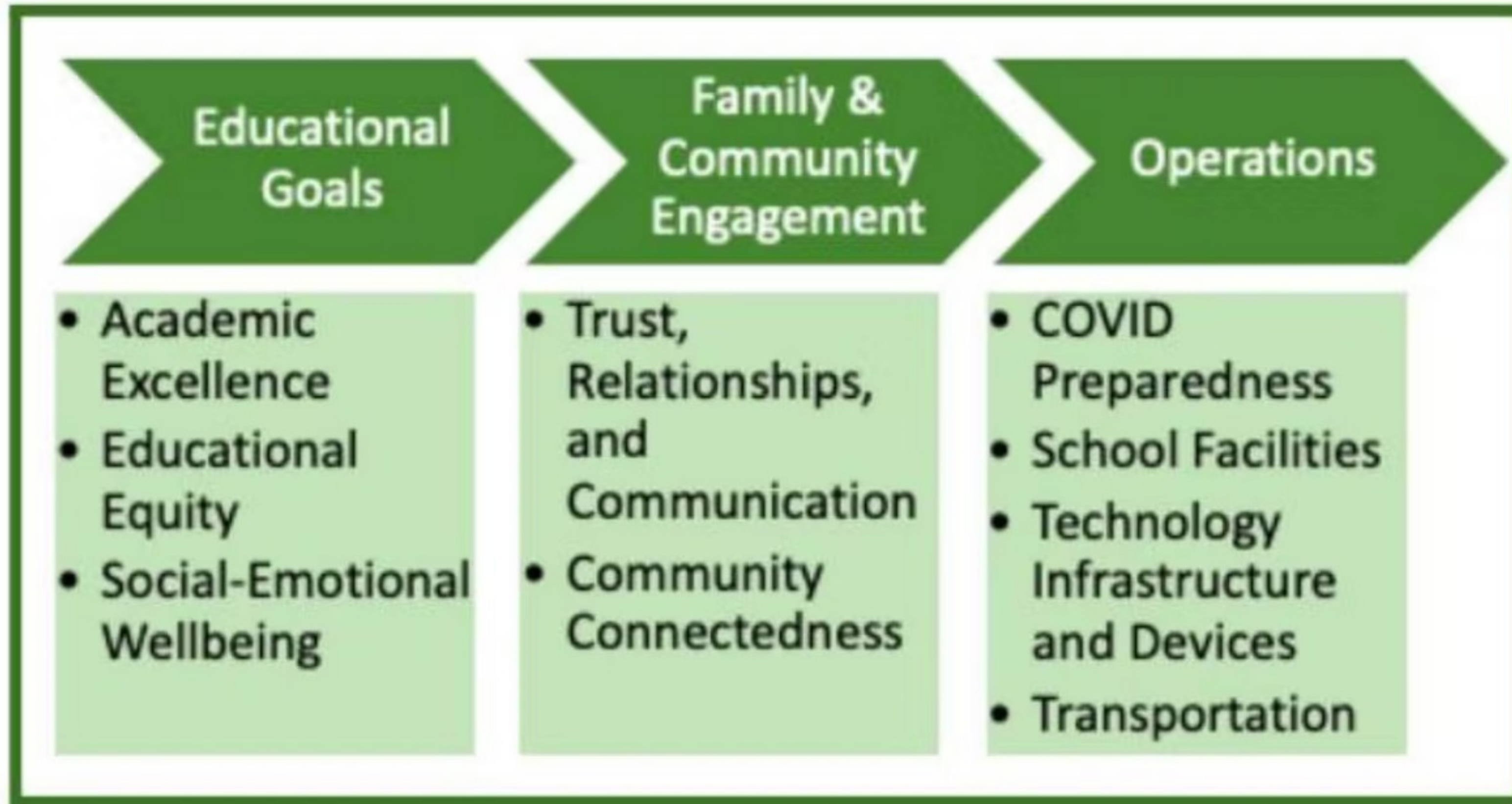
# Key Priorities



# Educational Priorities



Countryside Elementary





# Educational Delivery

*What do your district and school value?*

*Where do you want to be?*

Teacher-Centric	→	Student-Centric
Passive Learning	→	Active Learning
Classrooms	→	Flexible Learning Environments
Conventional Technology	→	1:1 Technology Environments
Individual	→	Collaborative
Subject-Based	→	Project-Based





# Universal Design for Learning



**Recognition Networks**  
The “what” of learning



**Strategic Networks**  
The “how” of learning



**Affective Networks**  
The “why” of learning

Multiple Means of **Representation**, **Expression** and **Engagement**

- Varied Delivery Methods
- Hands-On Learning
- Action and Expression





# Social Emotional Learning



- Character education
- Growth Mindset
- Mental health
- Mindfulness
- Resilience and Grit
- Classroom management

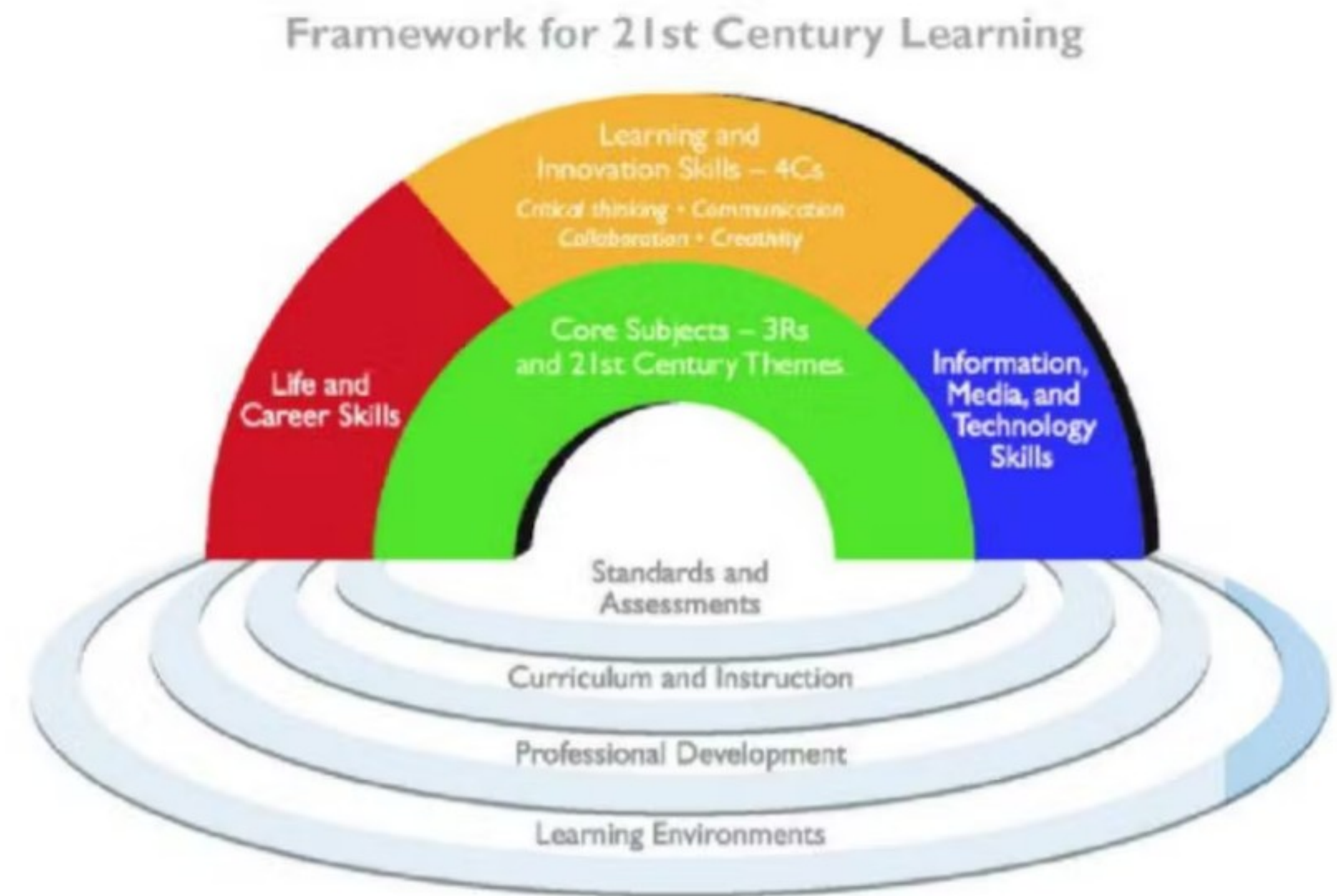




# Partnership for 21<sup>st</sup> Century Skills

## The 5 C's

- Critical Thinking
- Communication
- Collaboration
- Creativity
- Citizenship





# What are your top EDUCATIONAL priorities for the Countryside Elementary School?

social groups, individualized-intervention, pull-out learning, meeting learners where they are, safety,

Sensory needs. Calming space, de-escalation

Individualized intervention

SE regulation within the classroom, small group opportunities as well as all class, quiet spaces for learning, access to materials(storage and sinks)

Teacher latitude for learning.

Movement breaks. Indoor recess!

Calm down spaceSmall group or partner space More resources Carpet spaceStorage

Projects that support student learning - PBL

Small group, , project based learning, class meeting space,



# What are your top EDUCATIONAL priorities for the Countryside Elementary School?

Warm, cozy, easily clean, space for indoor resource, thoughtfully shaped classrooms, easy access to group spaces. Multiple deescalation spaces for cool down, controlled lighting,

Warm, cozy. Clean, breakout rooms, thoughtfully shaped classrooms, group spaces that are easy to access, appropriately places blue rooms with more than one attached for cool down, lockers in classroom, lighting that is easy to control, teachers space



# What are your top ARCHITECTURAL priorities for the Countryside Elementary School facility?

Community spaces, gymnasium that supports better movement, sensory spaces, a space for teachers to relax and have lunch, restrooms within K classrooms

Temperature control  
Access to specials indoors  
Grade levels together  
Cafeteria  
Student storage  
No overlapping space  
Classroom access outside  
No car access around the building

bathrooms close to pull-out learning spaces, gender neutral bathrooms, teacher bathrooms, break/lunch spaces for teachers

outdoor lunch spaces for teachers and students, sensory classroom, dimmable lights, auditorium with seating, pull-out space in hallway,/classroom

Shared classroom spaces - ie space between classrooms (diff grades) to collaborate

Well designed spaces for enrichment programs

Lots of outlets

Lots of parking

Outdoor classroom



# What are your top ARCHITECTURAL priorities for the Countryside Elementary School facility?

Project areas outside classrooms (like Angier)

Staff workrooms

Natural lighting

Not to modern

Traditional cozy comfortable place it is now. Not too modern

Storage

Storage behind whiteboards

Multiple movement spaces



# What are your top **COMMUNITY** priorities for the Countryside Elementary School program and facility?

Multiage playground

Outdoor bathroom access, parking, outside water fountain

Designated public space for voting or aftercare

Accessible playground

Accessible for special needs (like wheelchairs) no sand or wood chips

Be able to host community activities SEL spaces  
More collaborative spaces for adults

Makers space, Spaces for parents and families to meet with teachers or administrators (meeting space away from the front office)

Truly accessible playground

Assistive technology/PEC board availability outside



# What are your top **COMMUNITY** priorities for the Countryside Elementary School program and facility?

Dedicated aftercare space

Gathering for performances

Outdoor bathroom and water fountains

Phones in every classroom and loud speakers in every room

Safe and secure outdoors

Community garden; multipurpose room for projects etc. with parent volunteers; extra conference room;

Adult / parent gathering space. Larger meeting space but smaller meeting spaces as well

Maker spaces



# What do you consider the main STRENGTHS of your current facility?

Big windows, many exits,



What do you consider the main CHALLENGES of your current facility?





**Countryside Elementary**

# Design Patterns

for Future Ready School Facilities



# Make Sure to Jot Down the Ones You Love



You will be reacting to, rating and commenting on each batch of 9-10 patterns

This is about expanding your thinking about what is possible with regard the design of the renovated/new facility, and defining a common language of design priorities...



# Rate Every Slide



LOVE IT!



GREAT IDEA



NOT SO MUCH



MAYBE



It's the  
concept,  
not the  
details....





- There is a lot of overlap...
- You might like them all...
- You might want to change the language used or add new design patterns...
- We want to share a lot of ideas and see what sticks and what doesn't!





# Given



# New School Design Patterns

## Flexible Classrooms and Spaces



Hurld-Wyman School – DiNisco Design



Brightwood School – DiNisco Design

2



1





# New School Design Patterns

## Flexible Furniture



Braintree East Middle School - MDS



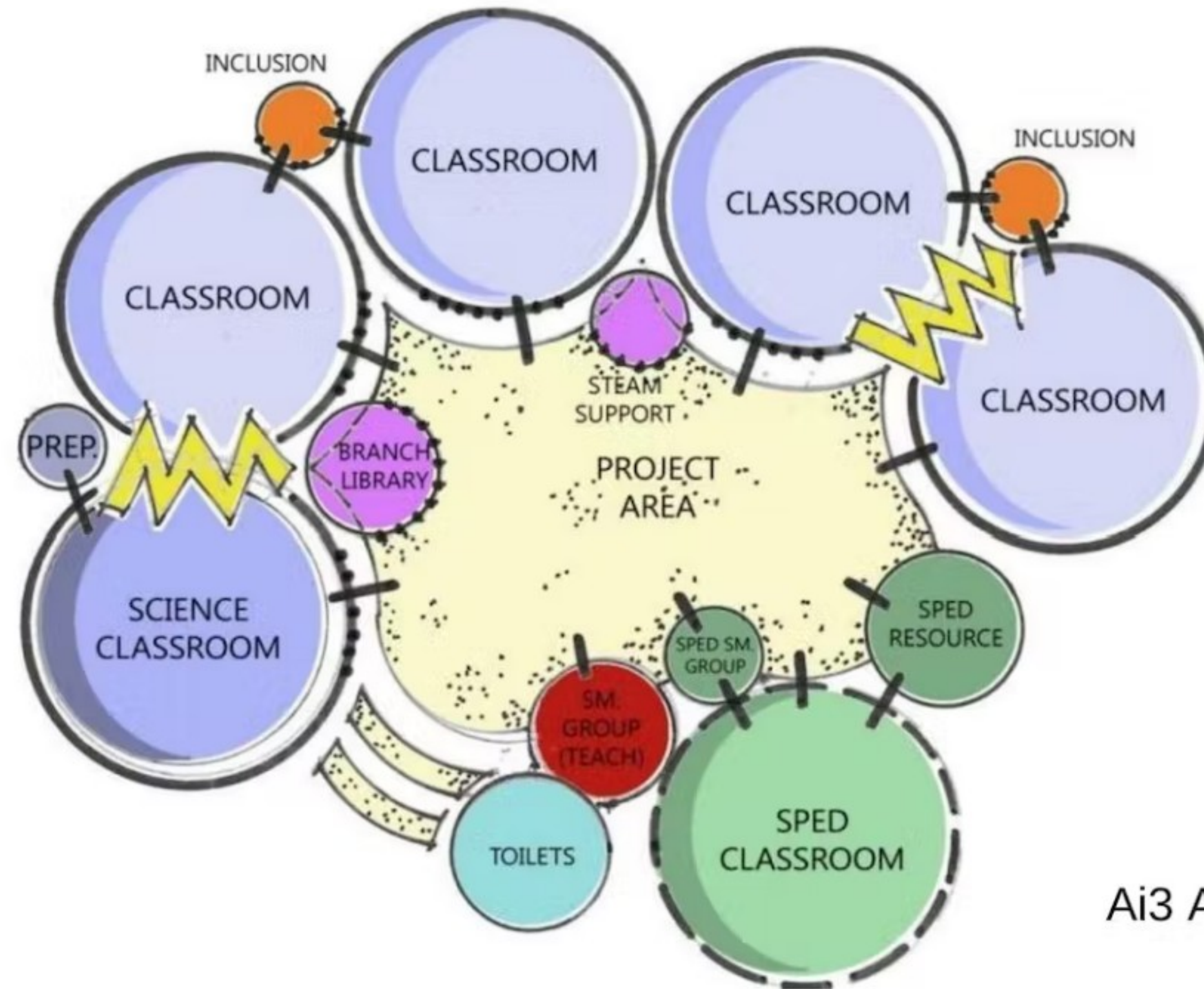
Hurd-Wyman School – DiNisco Design





# New School Design Patterns

## Push-In Special Education



Ai3 Architects



# New School Design Patterns

# Cafetoriums Multi-Purpose Space



Cabot Elementary School - DiNisco Design



Zervas Elementary - Perkins Eastman



# New School Design Patterns

## Community Access



Amherst Elementary – DiNisco Design with New Vista



Angier Elementary – DiNisco Design



# New School Design Patterns

## Sustainability



1





# New School Design Patterns

## Welcoming Arrival Safe Drop-off/Pick-up





# Rank these Design Patterns in order of the ones you are most excited about.





# Set 1



# New School Design Patterns

## Greeting and Gatekeeping



Zervas School – Perkins Eastman



Cabot School – DiNisco Design



# New School Design Patterns

## Wayfinding and Streetscapes





# New School Design Patterns

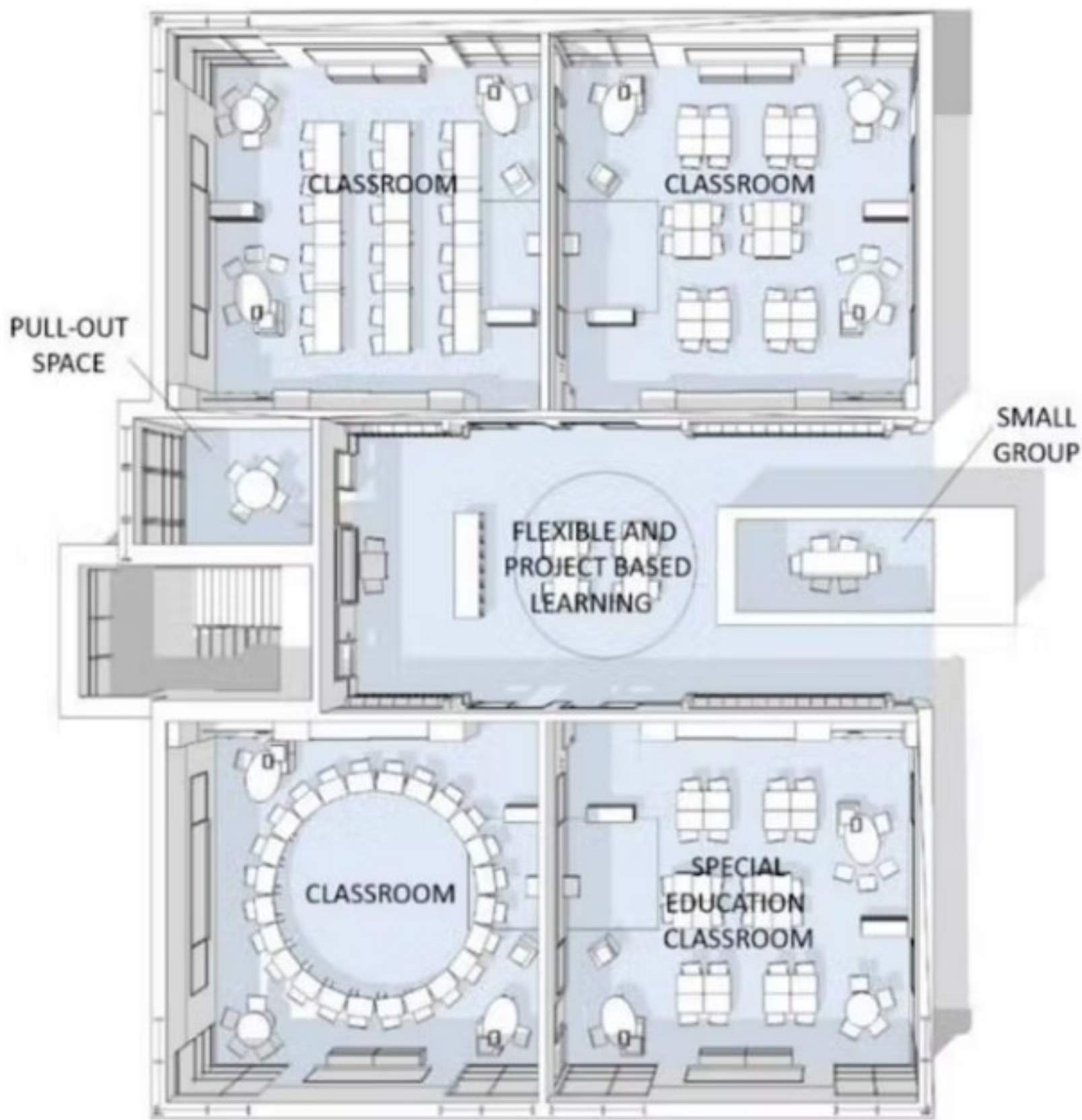
## Clusters of Learning





# New School Design Patterns

## Classroom Neighborhoods





# New School Design Patterns

## Classroom Zones



Cabot Elementary – DiNisco Design



Lexington Children's Place – DiNisco Design





# New School Design Patterns

## Good Storage/Cubbies





# New School Design Patterns

## Extended Learning Spaces



Cabot Elementary - DiNisco Design



Ivan Smith Elementary - Tappé Architects



Hurd Wyman Elementary - DiNisco Design



# New School Design Patterns

## Breakout and “Pull Over” Spaces



Brightwood Elementary School – DiNisco Design



Kennedy Elementary School – DLA



# Rank these Design Patterns in order of the ones you are most excited about.

- |     |                              |
|-----|------------------------------|
| 1st | Greeting and Gatekeeping     |
| 2nd | Wayfinding and Streetscapes  |
| 3rd | Clusters of Learning         |
| 4th | Classroom Neighborhoods      |
| 5th | Classroom Zones              |
| 6th | Good Storage/Cubbies         |
| 7th | Extended Learning Spaces     |
| 8th | Breakout and Pullover Spaces |





# Set 2



# New School Design Patterns

## Heart of the School



Douglas Elementary – DiNisco Design



Carver Elementary – HMFH Architects  
Photo by Ed Wonek Artworks



# New School Design Patterns

## Library Learning Commons



Brightwood Elementary – DiNisco Design



Cabot Elementary – DiNisco Design



## New School Design Patterns

# Media Center Learning Commons



Gibbs Middle School - Finegold Alexander with New Vista





# New School Design Patterns

# STEM/STEAM & Makerspaces





# New School Design Patterns

## Collaborative Environments



Brightwood Elementary School – DiNisco Design



Hastings Elementary School – DiNisco Design



# New School Design Patterns

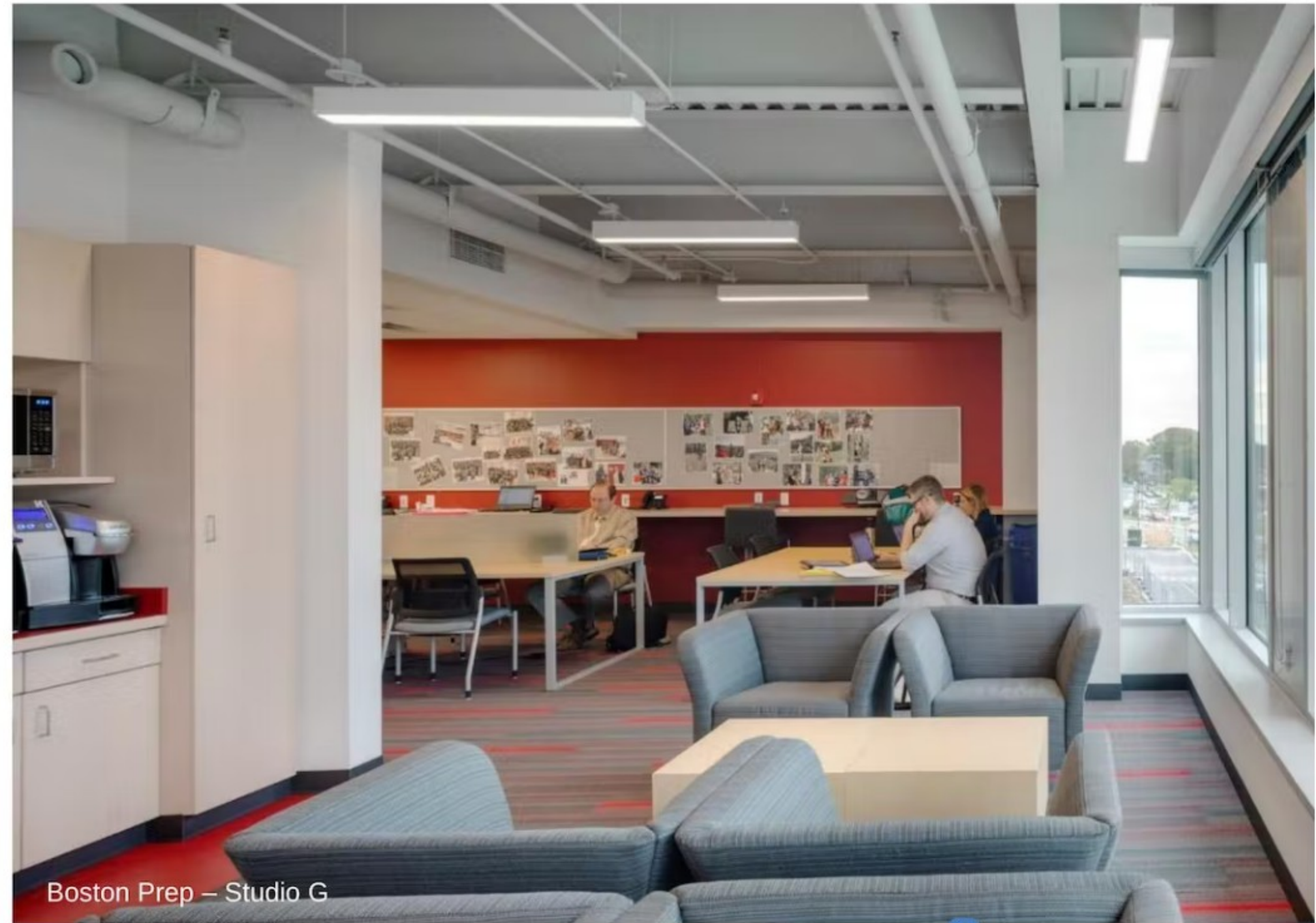
## Gathering Hubs and Presentation Spaces





# New School Design Patterns

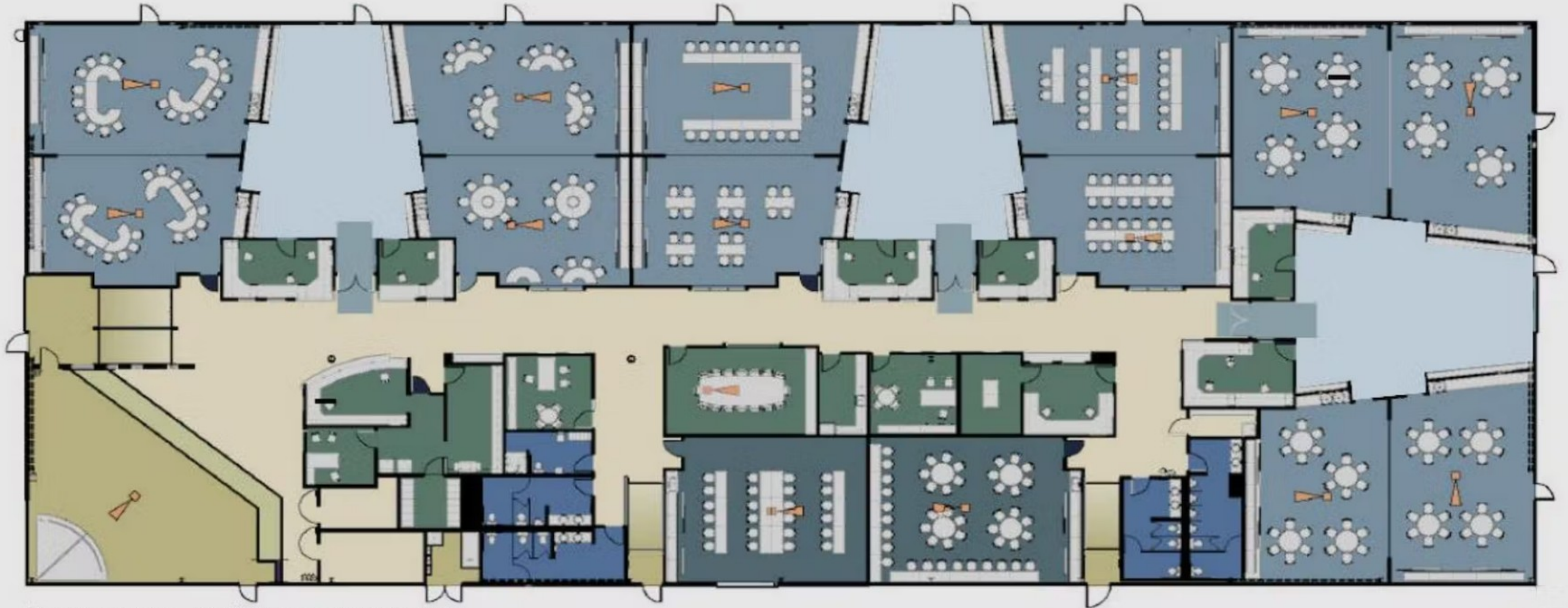
## Professional Work Areas





# New School Design Patterns

## Distributed Resources



High Tech Middle - Carrier Johnson with New Vista

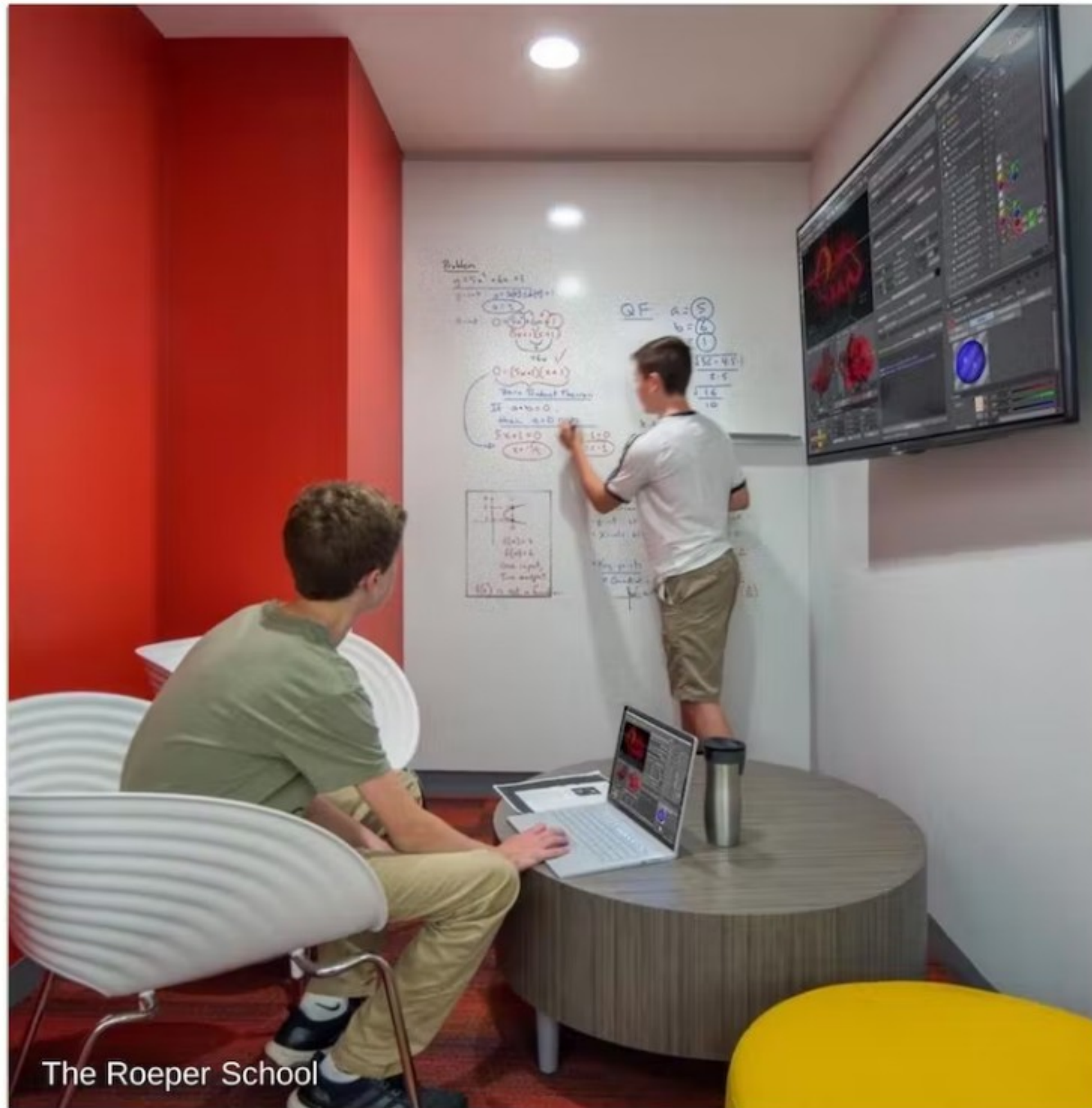
1





# New School Design Patterns

## Nooks, Caves and Quiet Spaces





# Rank these Design Patterns in order of the ones you are most excited about.

- |     |  |
|-----|--|
| 1st | Heart of the School                    |
| 2nd | Library Learning Commons               |
| 3rd | Media Center Learning Commons          |
| 4th | STEM/STEAM and Makerspaces             |
| 5th | Collaborative Environments             |
| 6th | Gathering Hubs and Presentation Spaces |
| 7th | Professional Work Areas                |
| 8th | Distributed Resources                  |
| 9th | Nooks, Caves, and Quiet spaces         |





# Set 3



# New School Design Patterns

## Hallway Learning



Kennedy Elementary School – DLA



Angier Elementary School – DiNisco Design





# New School Design Patterns

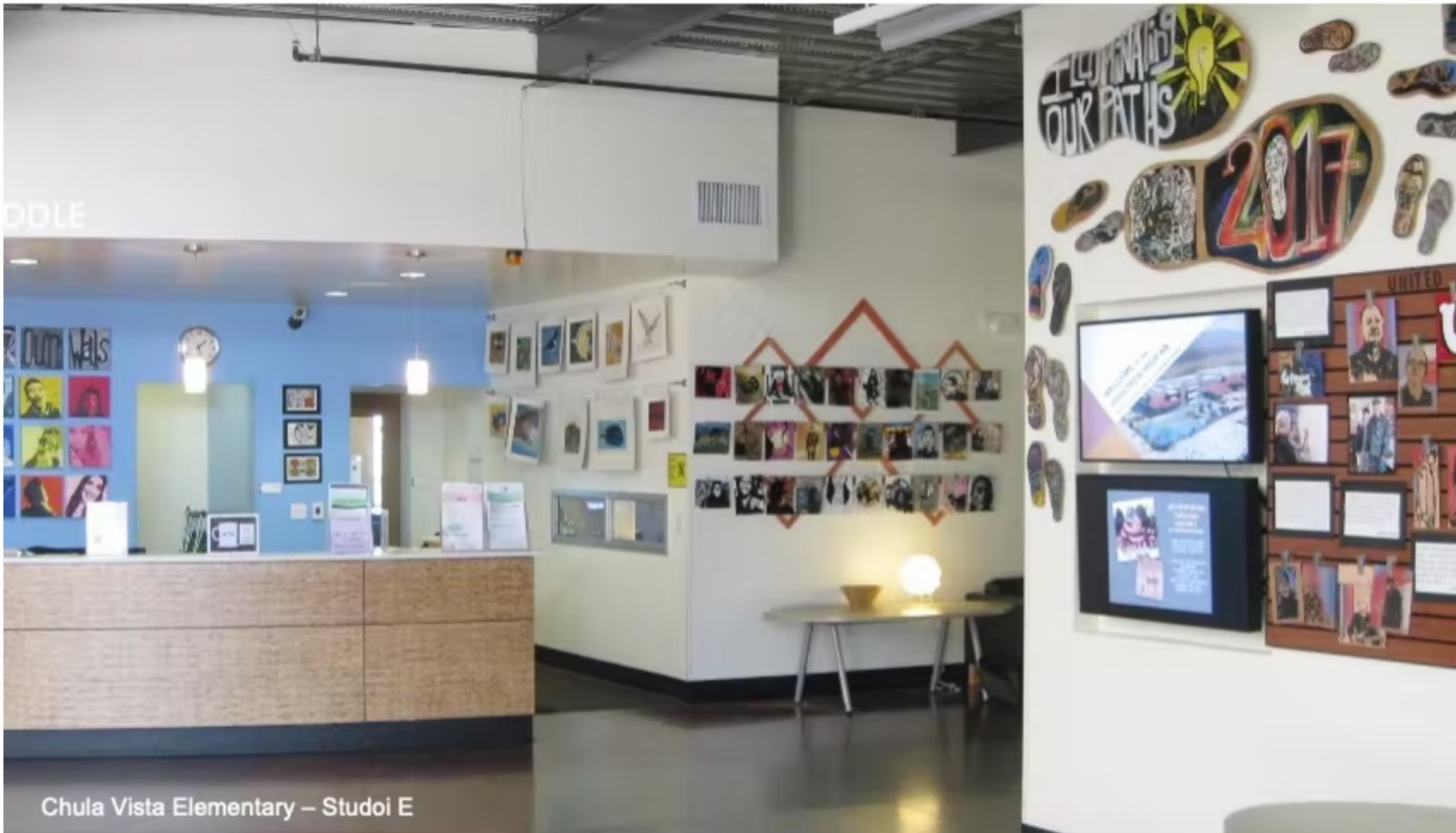
# Branding and Identity





# New School Design Patterns

## Display and Exhibition





## New School Design Patterns

# Visible Learning and Transparency



High Tech Middle – Carrier Johnson with New Vista



Cabot Elementary – DiNisco Design



MIT Stata Children's Center – Studio G



# New School Design Patterns

## History and Storytelling



West Bridgewater MHS – Flansburgh with New Vista



Clyde Brown Elementary - Tappé Architects



# New School Design Patterns

## Outdoor Connections and Learning





# New School Design Patterns

## Engaged Outdoor Play





# New School Design Patterns

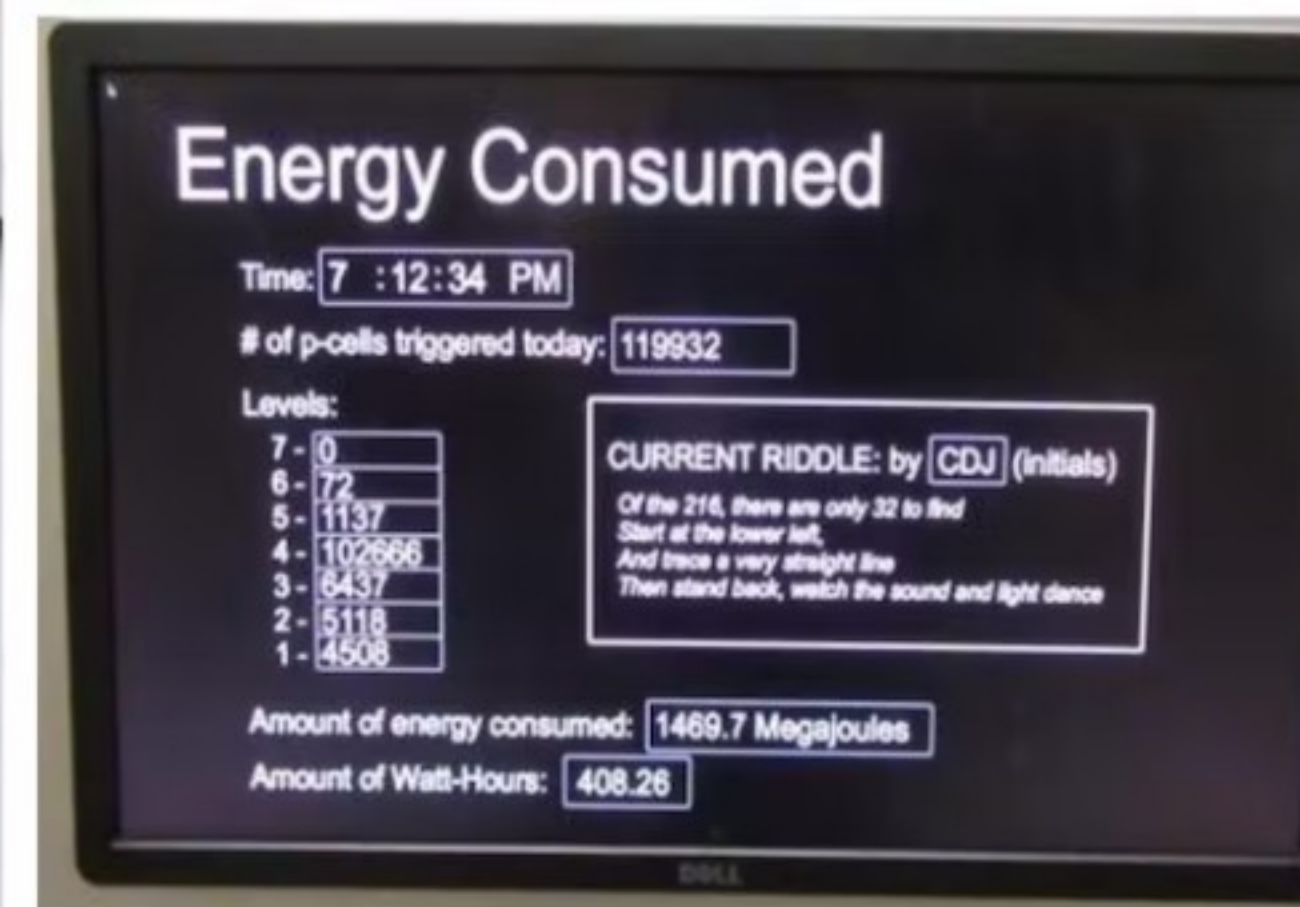
## Sustainability





# New School Design Patterns

## Building as Teacher





# Rank these Design Patterns in order of the ones you are most excited about.

- |     |                                   |
|-----|-----------------------------------|
| 1st | Hallway Learning                  |
| 2nd | Branding and Identity             |
| 3rd | Display and Exhibition            |
| 4th | Visible Learning and Transparency |
| 5th | History and Storytelling          |
| 6th | Outdoor Connections and Learning  |
| 7th | Engaged Outdoor Play              |
| 8th | Sustainability                    |
| 9th | Building as Teacher               |







Countryside Elementary

BREAK



# Small Group Design Pattern Prioritization

- Individually review the listing of design patterns (10 min)
- Share your priority patterns, then make a collective list of the top 8-12 patterns. Feel free to combine patterns and make up your own. You can include patterns from the list of "Givens" or not. (20-30 min)



# Next Time on *November 9, 2022*

- Guiding Principles
- Blue Sky Ideas
- Bubble Diagramming





Countryside Elementary

Q & A